



Welcome to the HGSS Induction Evening

Monday 2 July 2018



Making Friends



- **Induction day** – getting to know your form group, ice-breaker activities (bring a packed lunch – no canteen service available & PE kit) 8.35am-3pm
- **Disco** – Year 6 & 7 Thursday 7.30-9pm £5 on the door!
- **First day of term** – arrive at 8.55am before the rest of the school
- Lecture theatre for **break** and **lunch** – year 7 only
- **Clubs** – lots of afterschool activities such as sport, music & drama groups
- **Talk-the-talk** – external group runs a one day workshop aimed at improving oracy
- **Experience day** – Team building day for year 7 students & their form tutors – run by ex-Paralympic athletes
- Supervised group break & lunchtime



Homework



- First 2 weeks of term – English & maths homework only
- **Planners** to record homework and date due
- **Show My Homework** – for students and parents to access homework tasks set & attached worksheets plus students can upload homework to staff
- **LRC** open every day 8.30am-4.30pm Monday – Thursday & 8.30am-4pm on a Friday plus breaks and lunchtimes
- **Homework club** in Learning Support Department for SEN students
- Time allocation – usually **30 mins** per subject
- **Due dates** – never the next day!
- However if homework is not handed in on the date due – there will be a **detention** set! Green Detention 30 mins after school – sticker put in planner to inform parents.



Organisation

- **Tours** of the school on induction day and first day of term
- **Maps** issued to help you find your way around but ask if you get lost!
- Use your **planner** to check your timetable and plan your day
- Timetable – one week – have up on display at home
- Use your **Lockers** before and after school, break and lunchtime
- We have high expectations of **uniform** - make sure you are looking smart and following the school expectations.
- Check your timetable so you know when you need your **PE kit**
- **Squid card** or cash for canteen food – breakfast, break & lunch
- Lots of **teachers** to get to know! Don't worry about learning their names – 'Sir' and 'Miss' is fine!
- **Pack the night before**
- Have a folder for **homework**
- **Mobile phones** – allowed in school but must be switched off between 8.55am and 3.15pm – if seen or heard they will be confiscated!



Home/school contact



- **Partnership** between home and school – homework, attendance, punctuality and behaviour (home/school agreement – to be signed)
- Admissions forms – if not completed and returned students won't be able to be admitted or stay in school in September - highlighted on home/school agreement
- Form Tutor
- Pastoral Manager – Mrs Terry
- Head of Year
- SENCo – Mrs Hawkins
- Subject teachers
- Attendance and medical – attendance @holmer.org.uk
- **Trust!**



School office:
Phone or email
office@hgss.org.uk
01494 712219

Attendance

*We expect minimum
attendance of 95%*

A student that has 90% attendance

90% attendance = $\frac{1}{2}$ day missed per week

90% attendance = 4 weeks missed per year

90% attendance = $\frac{1}{2}$ a school year over 5 years

Research suggests that:

17 missed days a year = 1 grade lower than
expected



Awareness raising session for Parents and Carers

Growing up online



Growing up online....



Can you name the sites your children uses for:





Risks they might face....



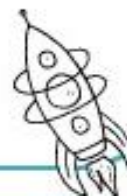
Cyberbullying



Grooming



Inappropriate
websites



Losing control
over pictures
and video



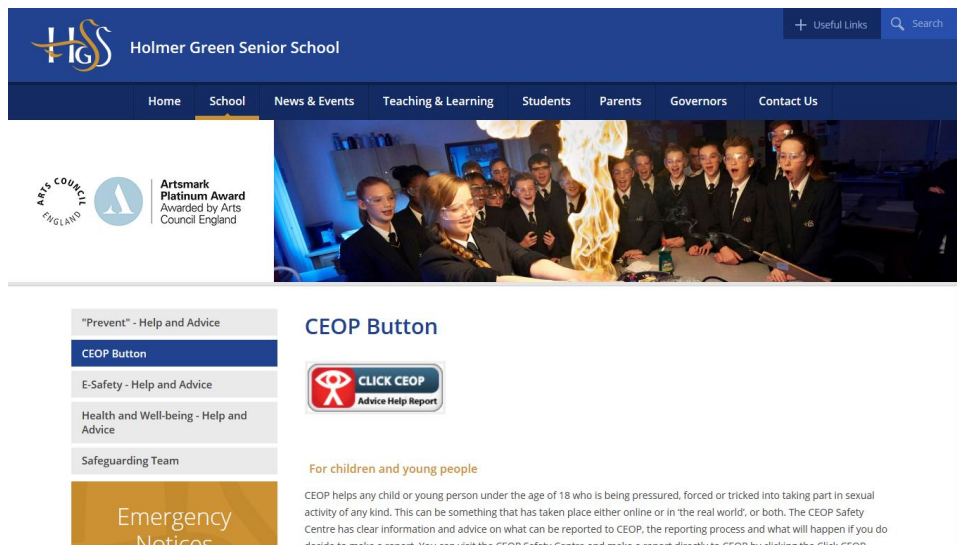


Report and Support



Report suspected online grooming – this could sexual chat, a child being asked to do something that makes them feel uncomfortable or someone insisting on meeting up .

www.ceop.police.uk



The button along with other useful help and advice on all Safeguarding matters are available on the school's website.



24 hour confidential helpline for children and young people .



Top tips



- *Offer reassurance and support. Don't be afraid to ask questions*
- *Tell your child that if they are being bullied to always keep the evidence*
- *Block the bullies*
- *Learn how to report and where to go for further support*



Peer to peer support network for young people who are being bullied

www.cybermentors.org.uk



What does the word
'inappropriate'
mean in your house?

Not age appropriate:

- Violence
- Racial Hate
- Pro eating disorders
- Gambling
- Pornographic



Parental Controls



Set controls on:

- Computers
- Laptops
- Tablets
- Mobile devices
- Games Consoles
- ALL internet enabled devices

Set on all devices
that link to the
internet

Remember... they are not 100% accurate and not a substitute for open communication!



Parental controls



How can they help?

- Block sites that are not age appropriate
- limit inappropriate and illegal material
- Set timings – automatic switch off at bedtime
- Monitor activity



Privacy: Social Networking

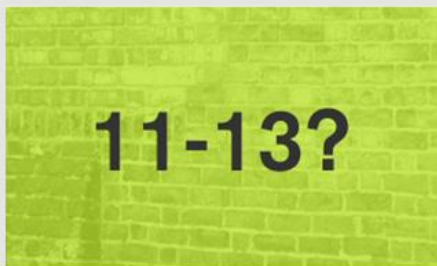


- Security settings need to be set to “Friends only”, that includes
- comments, posts and photos
- These “**Friends**” need to be people they know and trust in the real world
- **Content** - Only post content and photos they wouldn't mind showing you!
- Try your very best to be “Friends” with your child on Facebook
- Learn how to report an issue directly to Facebook



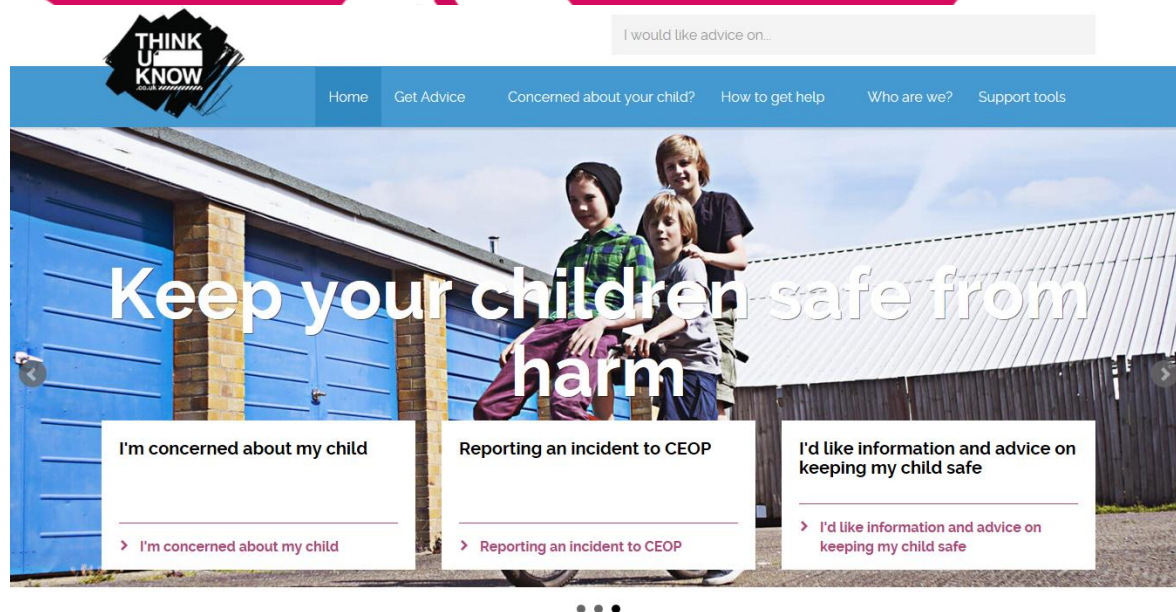
Welcome to CEOP's Thinkuknow

Are you...





For more information



www.thinkuknow.co.uk/parents

www.facebook.com/ceop

www.twitter.com/ceop

www.hgss.co.uk



Thank you!

