



Holmer Green Senior School

February 2019



Mission: To develop confident, young people, who strive to be the best they can be academically, personally and as citizens, ensuring that they are well prepared for a fast-paced, changing world.

Motto - 'Work Hard, be kind'

Core Values:

- Work Hard
- Be Kind
- Excellence
- Creativity



A Level Results Summer 2018

- +0.71 A Level, Level 3 Value Added
- 13th in England
- Top in Bucks league table

Position in England's league table	School Name	Value Added Score
1	Bredon School	Well above average 1.72
2	All Saints Catholic High School	Well above average 1.32
3	Studio West	Well above average 1.23
4	East London Arts & Music	Well above average 1.16
5	King's College London Maths School	Well above average 1.04
6	Fyling Hall School	Well above average 0.93
7	Bellerbys College London	Well above average 0.86
8	Abbey College Cambridge	Well above average 0.78
9	Cambridge Centre for Sixth Form Studies	Well above average 0.78
10	Felixstowe International College	Well above average 0.77
11	Babington House School	Well above average 0.75
12	Blessed Thomas Holford Catholic College.	Well above average 0.72
13	Holmer Green Senior School	Well above average 0.71

HGS Progress 8

+0.52 Progress 8

Highest performing group +0.9

Lowest performing group +0.2

SCHOOL	P8	EBACC
Beaconsfield High School	1.21	95%
Dr Challoner's High School	1.13	95%
Aylesbury High School	0.99	83%
Chesham Grammar School	0.93	86%
Aylesbury Grammar School	0.92	85%
Dr Challoner's Grammar School	0.85	68%
Wycombe High School	0.77	34%
Sir William Borlase's Grammar School	0.74	94%
Waddesdon Church of England School	0.73	27%
Cressex Community School	0.69	6%
Amersham School	0.53	2%
Sir Henry Floyd Grammar School	0.53	39%
Holmer Green Senior School	0.52	40%
Khalsa Secondary Academy	0.47	71%
Burnham Grammar School	0.44	47%
Royal Latin School	0.37	79%
St Michael's Catholic School	0.32	32%
John Hampden Grammar School	0.31	78%
The Royal Grammar School, High Wycombe	0.24	%
Sir William Ramsay School	0.24	25%



Expansion

Increase by two classes from Sept 2019 so that HGSS is 7 Form entry

Advantages:

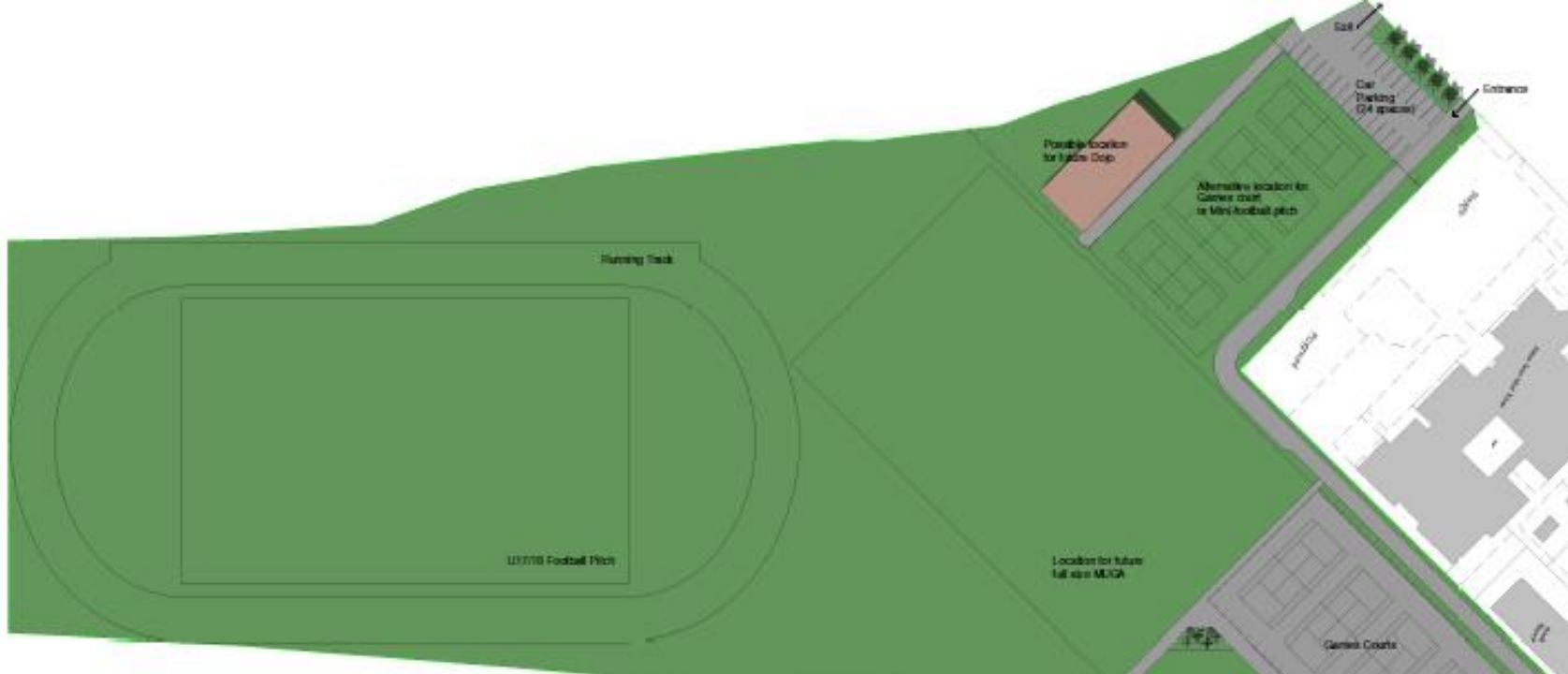
- New build
- Dedicated seated dining experience
- Sports Hall
- Covered tennis courts
- New English and Maths block
- Landscaped, outside seating areas
- Community facilities
- Financially more secure
- Offer more courses

Advantages continued:

- Sustainability of niche courses, e.g. music, drama
- Recruitment/retention of staff

Concerns:

- Loss of some field space
- Disruption to the site whilst building work takes place
- Traffic



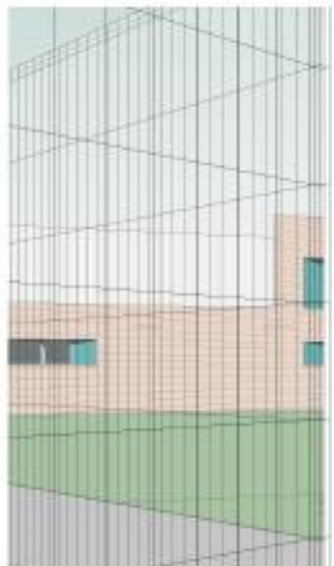
② Aerial Perspective



① Proposed Site Plan



① 3D Ground Floor





Curriculum Change

Improve the well-being of students and ensure all have 21st century skills for employment by removing 1 option and establishing a timetabled PSHCE, public speaking & careers provision instead.

Advantages:

- One GCSE less to revise for
- Less than 27 exams to sit
- Improved student well-being
- Improved quality of grades across other GCSEs
- In-line with average number of GCSEs in Bucks
- PSHCE taught by specialists in the timetable
- Public speaking, debating & careers offered
- PENN resilience programme built upon in year 9

Advantages continued:

- Morning registration to be used for preparation, homework support and reading groups
- Reduction in reliance on after school interventions saving students time & enabling access to enrichment instead
- Keeps HGSS in front of Government changes

Concerns:

- Three rather than four option choices



Quality of Teaching and Learning

Improve the quality of teaching and learning so that all students have consistently excellent teaching by piloting increasing staff training days from 6 to 8 and introducing a 2 week October half-term for Sept 2019.

Advantages:

- Improved well-being of students
- Improved grades for all students
- Improved quality of teaching and learning experience in lessons
- Staff CPD to further develop challenge of learners in lessons

Advantages continued:

- Greater higher order questioning by teachers
- Greater modelling by teachers
- Improved resources & reading programmes, etc.
- Improved recruitment/retention of staff



Buckinghamshire Term Dates

Pupil Days

Bank holidays

Transition days

School holidays

Proposed inset days

Sep-19						
Mon		2	9	16	23	30
Tue		3	10	17	24	
Wed		4	11	18	25	
Thu		5*	12	19	26	
Fri		6	13	20	27	
Sat		7	14	21	28	
Sun	1	8	15	22	29	

Oct-19					
Mon		7	14	21	28
Tue	1	8	15	22	29
Wed	2	9	16	23	30
Thu	3	10	17	24	31
Fri	4	11	18	25	
Sat	5	12	19	26	
Sun	6	13	20	27	

Nov-19					
Mon		4	11	18	25
Tue		5	12	19	26
Wed		6	13	20	27
Thu		7	14	21	28
Fri	1	8	15	22	29
Sat	2	9	16	23	30
Sun	3	10	17	24	

Dec-19						
Mon		2	9	16	23	30
Tue		3	10	17	24	31
Wed		4	11	18	25	
Thu		5	12	19	26	
Fri		6	13	20	27	
Sat		7	14	21	28	
Sun	1	8	15	22	29	

Jan-20					
Mon		6	13	20	27
Tue		7	14	21	28
Wed	1	8	15	22	29
Thu	2	9	16	23	30
Fri	3	10	17	24	31
Sat	4	11	18	25	
Sun	5	12	19	26	

Feb-20					
Mon		3	10	17	24
Tue		4	11	18	25
Wed		5	12	19	26
Thu		6	13	20	27
Fri		7	14	21	28
Sat	1	8	15	22	29
Sun	2	9	16	23	

Mar-20						
Mon		2	9	16	23	30
Tue		3	10	17	24	31
Wed		4	11	18	25	
Thu		5	12	19	26	
Fri		6	13	20	27	
Sat		7	14	21	28	
Sun	1	8	15	22	29	

Apr-20					
Mon		6	13	20	27
Tue		7	14	21	28
Wed	1	8	15	22	29
Thu	2	9	16	23	30
Fri	3	10	17	24	
Sat	4	11	18	25	
Sun	5	12	19	26	

May-20					
Mon		4	11	18	25
Tue		5	12	19	26
Wed		6	13	20	27
Thu		7	14	21	28
Fri	1	8	15	22	29
Sat	2	9	16	23	30
Sun	3	10	17	24	31

Jun-20					
Mon	1	8	15	22	29
Tue	2	9	16	23	30
Wed	3	10	17	24	
Thu	4	11	18	25	
Fri	5	12	19	26	
Sat	6	13	20	27	
Sun	7	14	21	28	

Jul-20					
Mon		6	13	20	27
Tue		7	14	21	28
Wed	1	8	15	22	29
Thu	2	9	16	23	30
Fri	3	10	17	24	31
Sat	4	11	18	25	
Sun	5	12	19	26	

Aug-20						
Mon		3	10	17	24	31
Tue		4	11	18	25	
Wed		5	12	19	26	
Thu		6	13	20	27	
Fri		7	14	21	28	
Sat	1	8	15	22	29	
Sun	2	9	16	23	30	

Students: 182 days

Teachers: 190 days

* 5 September 2019 - Year 7 and Year 12 only (all day)

6 September 2019 – all students in



Thank you

Change	Positives:	Concerns:
Expansion 5-7 form entry		
Removing 1 option		
Focus on improved quality of teaching and learning through - increased CPD and two week half-term		